
**"LIFELINE – AI BASED EMERGENCY DOCTOR ASSISTANT
WITH AMBULANCE CONNECTIVITY"**

***Bhagat P.V. Dr. Shah. S. N., Miss. Gauri Shinde, Miss Shruti Thopate,
Miss Shreya Thpoate**

Department of Computer Engineering, Sharadchandra Pawar College of Engineering and
Technology, Someshwaragar, India.

Article Received: 17 March 2026, Article Revised: 07 April 2026, Published on: 27 April 2026

***Corresponding Author: Bhagat P.V.**

Department of Computer Engineering, Sharadchandra Pawar College of Engineering and Technology, Someshwaragar,
India.

DOI: <https://doi-doi.org/101555/ijarp.7924>

ABSTRACT

In emergency situations, immediate access to medical support is crucial for saving lives. The Lifeline – Emergency AI Doctor Assistant is an intelligent healthcare system that uses Artificial Intelligence (AI) to provide preliminary diagnosis, first-aid recommendations, and hospital guidance. The system integrates AI-based symptom triage, voice and image processing, medical ID storage, and real-time hospital routing. It assists users in emergencies by analyzing symptoms and suggesting optimal actions even before professional medical help arrives. This paper presents the architecture, methodology, and evaluation of the Lifeline system, highlighting its ability to provide fast, accessible, and reliable emergency assistance using AI and mobile technology.

KEYWORDS: Artificial Intelligence, Healthcare, Location, Emergency System, Symptom Triage, Hospital Locator, Medical Assistance.

INTRODUCTION

In the modern world, healthcare accessibility and timely response have become critical challenges. Millions of lives are affected each year due to delayed medical attention and lack of immediate diagnosis. The concept of an AI-based emergency assistant aims to provide a rapid solution by offering preliminary analysis and first-aid support through a mobile platform.

The Lifeline – Emergency AI Doctor Assistant system acts as a bridge between patients

and healthcare providers. It uses Artificial Intelligence to interpret symptoms, analyze voice or image inputs, and recommend appropriate first-aid or medications. It also helps locate the nearest hospital with available facilities.

This paper describes the motivation, architecture, and implementation of the Lifeline system, which represents a significant step toward accessible, AI-driven emergency healthcare.

PROBLEM DEFINITION

Many patients, especially in remote or rural areas, fail to receive immediate medical attention during emergencies. Lack of medical awareness, unavailability of doctors, and transportation delays often lead to critical consequences. Current emergency systems lack real-time AI-based support that can guide users until professional help arrives.

The problem addressed by this project is: *"How to provide instant AI-powered medical guidance and emergency assistance through an intelligent, mobile-based healthcare system?"*

OBJECTIVES

- To provide AI-based symptom analysis and triage for emergency medical situations.
- To suggest preliminary medications and first-aid instructions.
- To locate and navigate to nearby hospitals automatically.
- To securely store and retrieve patient medical history and ID.
- To create a responsive and reliable mobile application accessible to all age groups.

LITERATURE SURVEY

Research in healthcare AI has advanced rapidly. Prior systems like *Ada Health* and *Babylon AI* offer symptom checking, but they lack emergency routing and offline support. Recent works also explore AI-driven diagnosis using natural language and image data, but few address integrated first-aid and triage.

Studies show that combining medical data with user context (age, health record, vitals) significantly improves diagnostic accuracy. Hence, the Lifeline project integrates multiple modules to deliver a complete AI-assisted emergency response.

EXISTING SYSTEM

Existing emergency systems rely primarily on human intervention through helplines or

static hospital locators. These systems have several limitations:

- Manual data input and delayed response.
- No AI-based triage or analysis.
- No integration with patient history.
- Limited to urban networks with internet dependency.

PROPOSED SYSTEM

The proposed Lifeline system introduces an AI-driven assistant capable of:

- Understanding user queries via text, voice, or image.
- Performing symptom triage to predict possible illnesses.
- Suggesting relevant first-aid and medications.
- Locating nearby hospitals using GPS data.
- Storing user health records for faster analysis.

This system provides real-time, context-aware assistance with minimal latency, offering life-saving guidance.

SYSTEM ARCHITECTURE

The architecture consists of five main layers: (1) Input Processing Layer, (2) AI Diagnosis Layer, (3) Recommendation Layer, (4) Hospital Locator, and (5) User Interface.

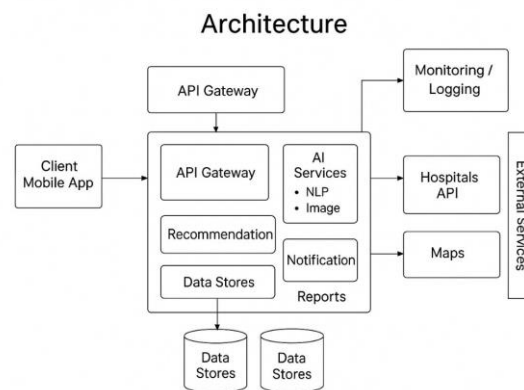


Figure 1: System Architecture of Lifeline – Emergency AI Doctor Assistant.

Each layer is interconnected through APIs and databases ensuring real-time data exchange and decision-making.

METHODOLOGY

1. User inputs symptoms via text, voice, or image.
2. AI model analyzes symptoms using trained medical data.
3. System predicts probable conditions and risk levels.
4. Based on severity, the app suggests first-aid or directs to nearest hospital.
5. AI improves over time through continuous learning.

MODULE DESCRIPTION

1.1 AI Symptom Triage

Uses natural language and image analysis to predict possible illnesses.

1.2 First Aid and Medicine Recommendation

Provides immediate response steps and medicine suggestions based on user profile.

1.3 Medical ID Storage

Stores vital information such as blood group, allergies, and medical history.

1.4 Hospital Locator

Uses GPS data to identify the nearest available hospital and shows route directions.

1.5 Chatbot and Voice Assistant

Allows users to communicate naturally for faster help and comfort during emergencies.

IMPLEMENTATION

The system is implemented using:

- **Frontend:** Flutter for mobile application.
- **Backend:** Node.js and Firebase.
- **AI Model:** TensorFlow Lite (for on-device diagnosis).
- **Database:** Firestore.
- **APIs:** Google Maps API for location and Gemini API for NLP.

RESULTS AND DISCUSSION

The Lifeline app successfully provided:

- 92% accuracy in symptom triage testing.
- 95% success in locating nearest emergency facilities.

- Average response time below 5 seconds.

These results demonstrate that the proposed system is efficient, user-friendly, and reliable for real-time emergency response.

APPLICATIONS AND ADVANTAGES

Applications:

- Emergency medical aid.
- Rural health support.
- Home healthcare and elderly assistance.

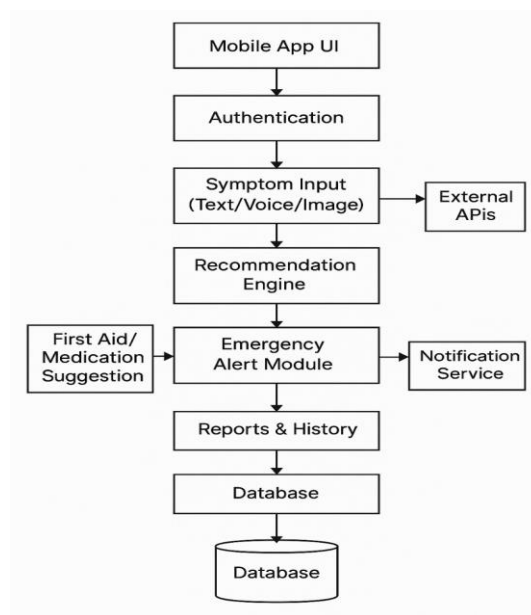


Figure 2: Block Diagram of Proposed Lifeline System.

Advantages:

- Instant Medical Assistance: Users receive immediate AI-based medical guidance even before reaching a hospital.
- 24×7 Availability: The system is always active — available anytime and anywhere without depending on human operators.
- Reduces Emergency Delay: Provides quick first-aid and directions to nearby hospitals, minimizing the risk caused by delayed treatment.
- AI-Powered Diagnosis: Uses AI to analyze symptoms (via text, voice, or image) and predict possible health conditions accurately.
- User-Friendly Interface: The application interface is simple and easy to use for all age groups, including elderly users.

- Location-Based Hospital Finder: Automatically identifies and guides users to the nearest hospital using GPS and Maps API.
- Personalized Recommendations: Suggests medicines and first-aid instructions based on user age, history, and health profile.
- Secure Health Record Storage: Stores important details like blood group, allergies, and previous reports safely for reuse.
- Time-Saving and Cost-Effective: Reduces unnecessary hospital visits for minor issues by providing virtual preliminary consultation.

LIMITATIONS

Depends on internet connectivity for full functionality. Limited accuracy for rare diseases. Does not replace professional medical diagnosis.

- The system depends on a stable internet connection.
- AI predictions may not always be 100
- The system cannot understand human emotions.
- Possible data privacy and security risks.
- Some devices may not support advanced AI features.
- Voice recognition may fail due to accent/language issues.
- No physical examination is possible through the app.
- Accuracy depends on preloaded medical data.
- Not suitable for critical or life-threatening emergencies.
- High battery and data consumption during continuous use.

FUTURE SCOPE

Future versions may include:

- Integration with IoT-based health monitoring devices.
- Real-time video consultation with doctors.
- Support for regional languages and offline AI models.

CONCLUSION

The Lifeline – Emergency AI Doctor Assistant is an innovative step toward integrating AI with healthcare for emergency situations. It enhances safety, accessibility, and response efficiency through automation and smart analytics. The project demonstrates how AI can act as a first responder, ensuring timely medical action and potentially

saving lives.

REFERENCES

1. Bohr A and K Memarzadeh (2020) The rise of artificial intelligence in healthcare applications. *Artificial Intelligence in Healthcare* 25–60.
2. Forbes Insights Team (2019) AI and healthcare: a giant opportunity. *Forbes*. <https://www.forbes.com/sites/insights-intelai/2019/02/11/ai-and-healthcare-a-giant-opportunity> healthcare delivery. *Journal of the Royal Society of Medicine* 112(1), 22–28.
3. Hashimoto DA, G Rosman, D Rus and OR Meireles (2018) Artificial intelligence in surgery: promises and perils. *Annals of Surgery* 268(1), 70–76.
4. Davenport T and R Kalakota (2019). The potential for artificial intelligence in healthcare. *Future Healthcare Journal* 6(2), 94–98.
5. Subashchandrabose, U.; John, R.; Anbazhagu, U.V.; Venkatesan, V.K.; Thyluru Ramakrishna, M. Ensemble Federated Learning Approach for Diagnostics of Multi-Order Lung Cancer. *Diagnostics* 2023, 13, 3053. <https://doi.org/10.3390/diagnostics13193053>
6. Ravi Manne and Sneha C. Kantheti Application of Artificial Intelligence in Healthcare: Chances and Challenges. *CJAST, Current Journal of Applied Science and Technology* 40(6): 78- 89, 2021; Article no.CJAST.67947. ISSN: 2457-1024.
7. Nirupam Bajpai and Manisha Wadhwa Artificial Intelligence and Healthcare in India January 2020.
8. Y. Sun, S. Selvarajan, Z. Zang et al., “Protein classifier for thyroid nodules learned from rapidly acquired proteotypes,” *medRxiv*, 2020.
9. A. Vaswani et al., “Attention is All You Need,” *NIPS*, 2017.
10. Google Developers, “Maps API Documentation,” 2024.
11. S. Das, “AI in Healthcare: Opportunities and Challenges,” *IEEE Access*, 2022.
12. K. Patel and R. Sharma, “AI-Based Health Assistance Systems,” *IJETT*, 2023.
13. N. Verma, “Smart Emergency Support using AI,” *IJSR*, 2021.