

UNVEILING DEMOGRAPHIC SHIFTS: SPATIO-TEMPORAL TRENDS OF THE TRIBALS IN THE EASTCENTRAL RAJMAHAL HIGHLANDS, JHARKHAND

***Dr Milan Mondal**

Assistant Professor of Geography, Department of Geography, M.U.C.Women's College,
Burdwan.

Article Received: 02 March 2026, Article Revised: 20 March 2026, Published on: 10 April 2026

***Corresponding Author: Dr Milan Mondal**

Assistant Professor of Geography, Department of Geography, M.U.C.Women's College, Burdwan.

DOI: <https://doi-doi.org/101555/ijarp.2171>

ABSTRACT:

According to the study, the number of Scheduled Tribes in the East Central Rajmahal Highlands is steadily rising. According to the 2011 Census, there are 4,40,911 people living in the study area. The population growth rate has increased by 18.90% over the past 50 years (1971–2011). The decrease in the death rate is the reason for the population growth in the study area. The population density in the study area has changed from 206 people per square k.m. and 381 people per square k.m. in 2011 and 1971, respectively. Most people live in rural areas. The percentage of people living in cities is just 10.79%. It depicts an uneven population distribution between rural and urban areas and demonstrates the dominance of the rural economy, especially agriculture, in the research region. This paper aims to analyse the current trends as well as the temporal and spatial fluctuations of the Scheduled Tribes population within the research region.

KEYWORDS: *Demography, Population, Highlands, Scheduled Tribes, Temporal variations.*

INTRODUCTION

The current pattern of the Scheduled Tribes population in the study area, as well as its temporal and spatial fluctuations, are discussed. The Eastcentral Rajmahal Highlands, which span three blocks of Dumka district—Dumka, Raniswar, and Shikaripara—in the State of Jharkhand, India, are a part of the Chotanagpur Highlands and stretch from 23°55'15"N to 24°10'15"N latitudes and 86°56'00" E to 87°30'00" E longitudes (Fig. 1) taking up 1164.6

square kilometres, the study area is located in the Eastcentral Rajmahal Highlands and includes the whole Dumka, Ranishwar, and Shikaripara administrative blocks of the Dumka district of Jharkhand. It consists of one Dumka Town municipal area and 753 villages. The study area's terrain is primarily rugged and undulating, with remnant hills and hillocks scattered throughout. As a result, the region is among the State of Jharkhand's backward areas.

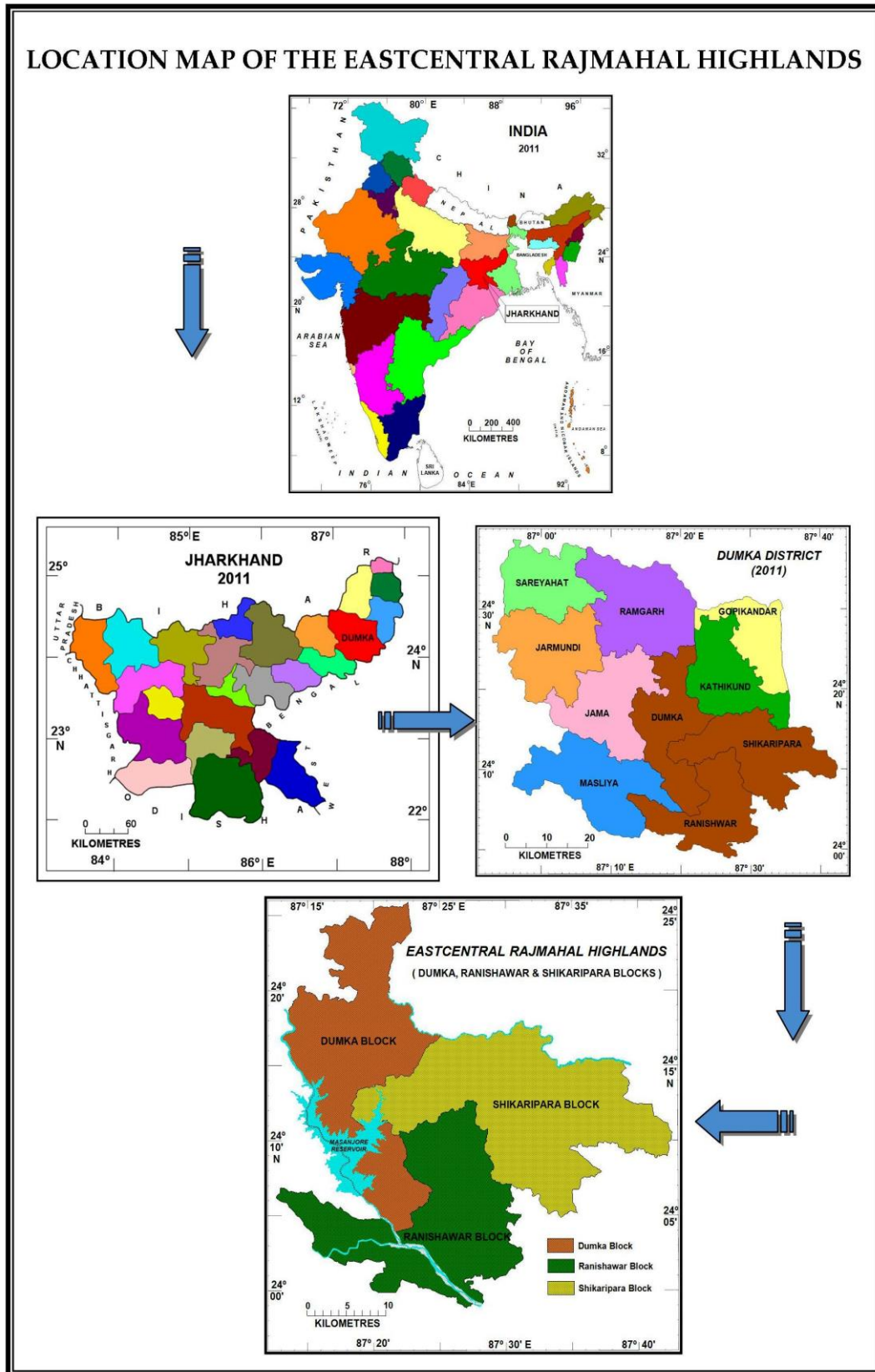
According to the 2011 Census, the Eastcentral Rajmahal Highlands has a total population of 4,40,911, with an average density of 381 people per square k.m. and sex ratio is 975. Just 44.47% of S.T. population (Census of 2011). So, from 1971 to 2011, S.T. has gone down by 6.30%. people who live in the area being studied. The study area shows that the sex ratio changed from 950 in 1971 to 975 in 2011 respectively. The average literacy rate in the study area is 55.96%. The number of literate people in the study area has grown by 35.15% from 1971 to 2011. The occupational structure of the area is heavily influenced by caste dynamics and has been divided into two main categories: i) Agricultural Workers and ii) Non-Agricultural Workers. The majority of workers in the study area are involved in agriculture. From 1971 to 2011, the number of agricultural workers in the study area went down by 11.11%, while the number of non-agricultural workers went up by 17.18%. The fact that fewer and fewer people are working in agriculture shows that the study area doesn't have a lot of agricultural activity. The study has the following goals:

- a) To look at the total number of scheduled tribes
- b) To examine the expansion and dispersion of the scheduled tribe population.
- c) To examine the spatio-temporal patterns of the scheduled tribe population.
- d) To find out how the scheduled tribe population changes from block to block.
- e) To learn more about their traits and how they are spread out.

MATERIALS AND METHODS

Georeferencing and putting together all three C.D. There are block maps for Dumka, Ranishwar, and Shikaripara. For the study of S.T. We have put together, calculated, and sorted Census data from 1971 to 2011 about the population and their social and economic conditions. It includes parts of seven 1:50,000 topographical maps: 72P/3, 4, 7, 8, 11, 12, and 73M/5. The biggest areas are in 72P/8 and 72P/12. A collection of maps and diagrams (Fig. 1 to 7) on S.T. The population has been readied for the analysis and visual representations of the entire study area. Using 21st Century GIS Professional 2012 software, the entire study area has been digitised and mapped. An S.T. population map has been prepared on the basis

of the extracted data from topographical sheets, and a percentage frequency histogram has been drawn.



RESULTS AND DISCUSSION

The Eastcentral Rajmahal Highlands having total S.C. population is 28314 according to 2011 Census. The distributions of S.C. population are uneven. Some villages having highest concentration of population as well as some villages showing lowest concentration of S.C population. The study area shows the change in S.C. population from 12307 and 28314 in 1971 and 2011 respectively. The S.C. population and block-wise rate of change during 1971 to 2011 of the study area are given in Table 1 and Fig. 2.

1.1. Temporal Variation of Scheduled Tribes (ST) Population

The study area confirms the change in S.T. population from 50.78 % and 44.47 % in 1971 and 2011 respectively. From 1971 to 2011 there was 8.40% decrease of S.T. population in Dumka block; whereas in these periods, decreasing trend has been identified with 0.46% decrease in Ranishwar block and 5.78% decrease in Shikaripara block. Thus from 1971 to 2011 there has been net decrease of 6.30% of S.T. population in the study area. The percentage of S.T. population and block-wise rate of change during 1971 to 2011 of the study area are given in Table 1 and Fig. 2.

Table 1: Block-wise Scheduled Tribes (ST) Population 1971 – 2011.

Name of the Blocks	1971			2011			1971 - 2011
	Total Population	S.T. Population	% to Total Population	Total Population	S.T. Population	% to Total Population	Rate of Change (%)
Dumka	100256	42807	42.70	210785	72299	34.30	8.40
Ranishwar	65017	29497	45.37	101667	45656	44.91	0.46
Shikaripara	75171	49788	66.23	131464	79475	60.45	5.78
Total	240444	122092	50.78	443916	197430	44.47	6.30

Source: Data obtained from Santal Parganas & Dumka District Census (1971 to 2011) and compiled by the researcher

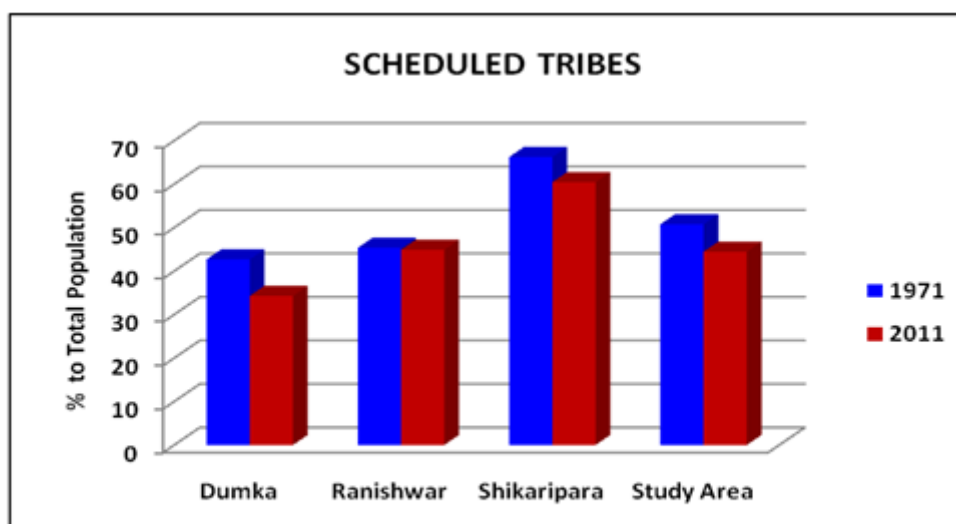


Fig. 2 Diagram prepared by the researcher on the basis of tabulated data.
Source:

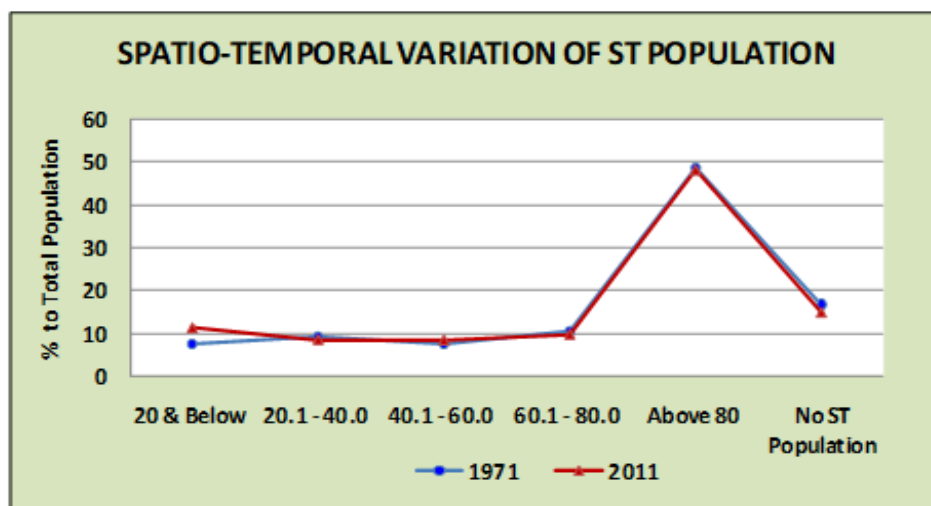


Fig. 3
Source: Diagram prepared by the researcher on the basis of tabulated data

Table 2: Category-wise number of villages with percentage of S.T. population, 1971.

Percentage Categories	No. of Villages Within Each Blocks			Total No. of Villages	Percentage to Total
	DUMK A	RANISHW AR	SHIKARIPA RA		
20 & Below (Very Low)	20	25	10	55	7.54
20.1 - 40.0 (Low)	37	11	18	66	9.05
40.1 - 60.0 (Medium)	18	20	17	55	7.54
60.1 - 80.0 (High)	34	16	26	76	10.43
Above 80 (Very High)	113	82	160	355	48.70
No ST Population	39	54	29	122	16.74
TOTAL	261	208	260	729	100

Table 3: Category-wise number of villages with percentage of S.T. population, 2011

Percentage Categories	No. of Villages Within Each Blocks			Total No. of Villages	Percentage to Total
	DUM KA	RANISH WAR	SHIKARIP ARA		
20 & Below (Very Low)	34	27	20	81	11.11
20.1 - 40.0 (Low)	36	11	14	61	8.37
40.1 - 60.0 (Medium)	19	22	19	60	8.23
60.1 - 80.0 (High)	23	14	33	70	9.60
Above 80 (Very High)	118	83	149	350	48.01
No ST Population	31	51	25	107	14.68
TOTAL	261	208	260	729	100

Source: Data obtained from Santal Parganas & Dumka District Census (1971 & 2011) and compiled by the researcher

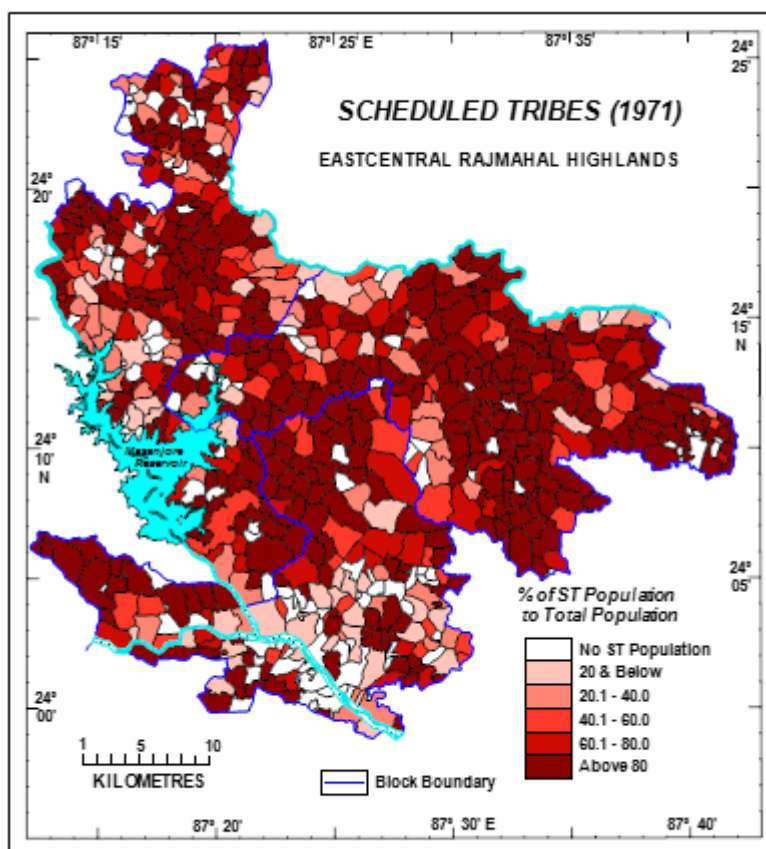


Fig. 4

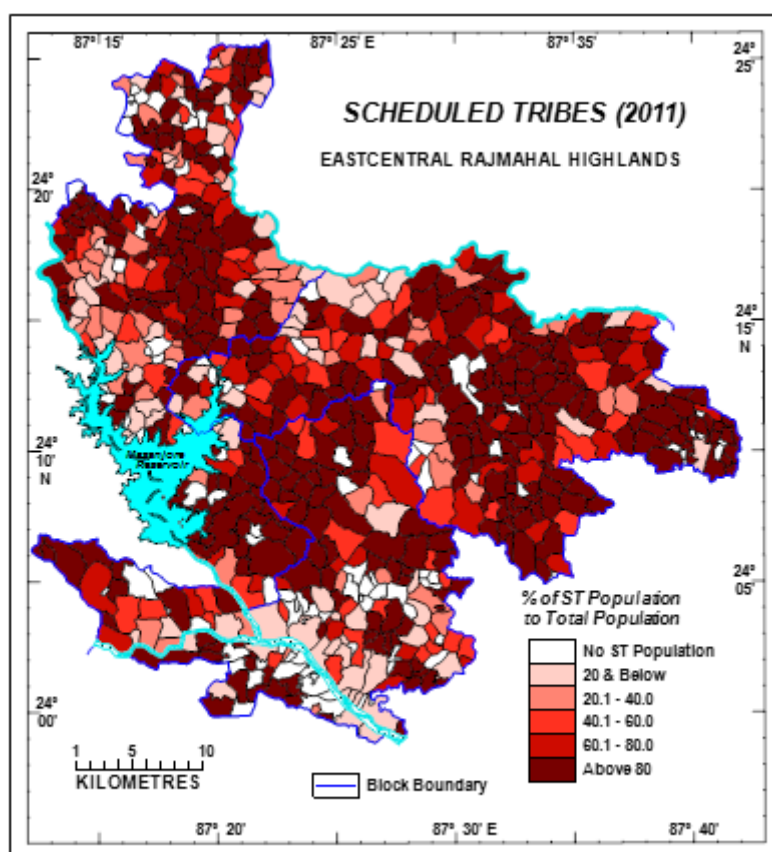


Fig. 5

Source: Data obtained from Santal Parganas & Dumka District Census (1971 & 2011) and maps prepared by the researcher

1.2. Spatial Variation of Scheduled Tribes (ST) Population

During 1971, S.T. population was only 50.78 %. The regional distribution has been analysed (Table 2). Table 2 and Figs. 3, 4 show that in respect of total block population, S.T. population is highest in Shikaripara block (66.23%) followed by Ranishwar block (45.37%) and Dumka block (42.70 %). Out of 729 villages, only 55 villages (7.54%) fall under very low (20 and below) and 66 villages (9.05%) have low (20.1 – 40.0) S.T. population. These villages are found in the north-eastern, southern and western part of the study area. Total 355 villages (48.70%) experience above 80 percent (very high) S.T. population, are concentrated major portion of Shikaripara block, northern and southern parts of Dumka block and north, north-western parts of Ranishwar block.

In the year 2011, S.T. population of the study area is 44.47 %. Table 3 and Figs. 3, 5 show that in respect of total block population, S.T. population is highest in Shikaripara block (60.45%) followed by Ranishwar block (44.91%) and Dumka block (34.30%). Out of 729 villages, only 81 villages (11.11 %) fall under very low (20 and below) and 61 villages (8.37

%) have low (20.1 – 40.0) S.T. population (Table 3). These villages are scattered in the north, north-eastern, eastern, south-eastern, southern and western part of the study area. Altogether 350 villages (48.01%) experience above 80 percent (very high) S.T. population, are concentrated in southern and central portion of Dumka block; north, north-western parts of Ranishwar block and entire eastern, east-central, western parts of Shikaripara block. The village-wise spatio-temporal variation of S.T. population has also been analysed.

1.3. Changes in Scheduled Tribes (ST) Population from 1971 to 2011

The calculation of village-wise population data (729 villages) is reflected and summarised in Tables 2, 3 and 4. The study area, Eastcentral Rajmahal Highlands shows an overall decrease (6.30%) in S.T. population during a period of 50 years. If we analyse the village-wise data, we see that in every block, there has been both increase and decrease in S.T. population. By comparing various columns of Table 13.15, the pattern of changes from 1971 to 2011 can be easily understood. The S.T. population increased in 230 villages (Dumka 102, Ranishwar 65 and Shikaripara 63 villages) whereas the decrease was noticed in 324 villages (Dumka 113, Ranishwar 79 and Shikaripara 132 villages) and out of 729 villages 175 villages represent no change of S.T. population.

Table 4: Changes in Scheduled Tribes (ST) 1971 to 2011.

Scheduled Tribes	No. of Villages Within Each Blocks			Total No. of Villages	Percentage to Total
	DUM KA	RANISH WAR	SHIKARIP ARA		
INCREASE (+)	102	65	63	230	31.55
DECREASE (-)	113	79	132	324	44.44
NO CHANGE	46	64	65	175	24.01
Total No. of Villages	261	208	260	729	100

Source: Data obtained from Santal Parganas & Dumka District Census (1971 & 2011) and compiled by the researcher

CONCLUSION:

It is clear from the above discussion that the population of Scheduled Tribes (ST) is growing over time. According to the study, the Eastcentral Rajmahal Highlands' population is steadily growing. The majority of people live in rural areas. Just 47,584 people, or 10.79% of the population, live in cities. It shows an uneven population ratio between rural and urban areas. The study area demonstrates how the sex ratio changed from 950 in 1971 to 975 in 2011. The S.T. population in Dumka block decreased by 8.40% between 1971 and 2011, while

Ranishwar block and Shikaripara block saw declines of 0.46% and 5.78%, respectively. As a result, the S.T. population in the study area decreased by 6.30% between 1971 and 2011. Shikaripara block had the largest S.T. population in 1971 (66.23%), followed by Ranishwar block (45.37%) and Dumka block (42.70%). Only 55 villages (7.54%) of the 729 villages have very low S.T. populations (20 and below), while 66 villages (9.05%) have low S.T. populations (20.1–40.0). Over 80% (very high) of the population is S.T. in 355 villages (48.70%). Shikaripara block had the largest S.T. population in 2011 (60.45%), followed by Ranishwar block (44.91%) and Dumka block (34.30%). Only 81 villages (11.11%) of the 729 villages have very low S.T. populations (20 and below), and 61 villages (8.37%) have low S.T. populations (20.1–40.0). A total of 350 villages (48.01%) have a population of more than 80% (very high) S.T. Over a 50-year period, the study area's S.T. population decreased by 6.30%. 230 villages (Dumka 102, Ranishwar 65, and Shikaripara 63) saw an increase in the S.T. population, while 324 villages (Dumka 113, Ranishwar 79, and Shikaripara 132 villages) saw a decrease. Of the 729 villages, 175 villages showed no change in the S.T. population because the study area's economic opportunities have not kept up with the population's rapid growth.

ACKNOWLEDGMENTS

The author give a sincere thanks to the respected Editors and Reviewers for their valuable suggestions to improve the quality of the work. I also express my gratitude to my family and well-wishers who have directly or indirectly helped me in this work.

REFERENCES

1. Alvi. Z., *Statistical Geography: Methods and applications*. Rawat Pub. New Delhi (1995).
2. Basu, M., *Terrains and the Development of Agriculture in the Madhupur Erosion Surface in Bihar*. Unpublished Ph.D. Thesis, The University of Burdwan, West Bengal, India (1998).
3. Bhattacharjee, A. K., *Terrains and Agriculture in the Deoghar Subdivision, Jharkhan, India*, Unpublished Ph.D. Thesis, The University of Burdwan, West Bengal, India (2004).
4. Chatterjee, S.C., *Physiographic Evolution of Chotanagpur plate, Calcutta Geographical Review*, Vol. XI (1949).

5. Desai, A.R., Tribes in Transition in Ramesh Thapar (ed), Tribe, Cast and Religion in India. Delhi: The Macmillan Company India Ltd.,15-28 (1977) .
6. Khadse, N. H., *Evaluation of Terrain and Human Resources for the Development of Agriculture in Akola District, Maharashtra*. The University of Burdwan, West Bengal, India (2003).
7. Mahmood, A., *Statistical Methods in Geographical Studies*. Rajesh Pub., New Delhi (1977).
8. Mahto, A., *Changes in Terrains and Socio-Economic Profile of an Oraon Dominated Rurban Centre in Chotanagpur*, Anthropological Survey of India, Kolkata (2006).
9. Mondal,M., Exploring the Surface Water Resource and their Characteristics of the Eastcentral Rajmahal Highlands, Jharkhand, India, *International Journal of Current Science (IJCSPUB)*, 14 (01), 549-561 (2024).
10. Mondal,M., Geology and Lithological Characteristics of the Eastcentral Rajmahal Highlands, Jharkhand, India, *Journal of Arts, Science and Technology (JAST)*,04,13-26 (2020).
11. Mondal,M., To Analyse the Existing Pattern as well as Spatial and Temporal Variations Of Human Population in the Eastcentral Rajmahal Highlands, Jharkhand, India, *Journal of Arts, Science and Technology (JAST)*,05, 43-53 (2023).
12. Mondal,M., Ground Water Resource and their Characteristics of the Eastcentral Rajmahal Highlands, Jharkhand, India, *International Journal For Multidisciplinary Research (IJFMR)*, 06 (01), 01-08 (2024).
13. Mondal,M., Literature Survey and Review on Terrain, Terrain Classification, Terrain Evaluation, Agriculture Landuse, and Landuse Planning in the Eastcentral Rajmahal Highlands, Jharkhand, India, *International Journal of Creative Research Thoughts (IJCRT)*, 12 (02),124-129. (2024).
14. Mondal,M., Understanding Spatio-Temporal Dynamics of Scheduled Caste Population in Eastcentral Rajmahal Highlands, Jharkhand, *International Journal Advanced Research Publications (IJARP)*, 2 (02),1-11. (2026).
15. Mondal,M., Investigating the Dissection Index of the Rajmahal Highlands (Eastcentral),
16. Jharkhand: Geomorphological Insights, Intuitions & Insights (I&I), 3 (01), 37- 45. (2026).
17. Monkhouse, F. J. and Wilkinson, H. R., *Maps and Diagrams: Their compilation and construction*. B.I. Publications Private Ltd. New Delhi (1966).

18. Prasad, A., *Chotanagpur: Geography of Rural Settlements*. Ranchi University, Ranchi (1973).
19. Roy Chaudhury, P.C., *Santhal Parganas District Gazetteers*, The Superintendent Secretariat Press, Bihar, Patna (1965).
20. Mahadevan, T.M., *Geology of Bihar and Jharkhand*, Geological Society of India, Bangalore. 420 (2002)
21. Singh, R. P., *Geomorphological Evolution of Chotanagpur Highlands- India*. National Geographical Society of India, Varanasi (1969).
22. Singh, R. P., Kumar, A., *Monograph of Bihar: A Geographical Study*, Bharati Bhawan Pub., Patna (1970).
23. Singh, R.L., *India: A Regional Geography*, N.G.S.I., Varanasi (1971).
24. Singh, R.L., *Morphometric Analysis of Terrain*. Bulletin No. 22, *National Geographical Society of India, Varanasi* (1974).
25. Singh, R.L. and Singh, S.B., *Morphometric Evaluation of Terrain and Morphogenetic Mapping, In different Terrain type areas in India*, *National Geographical Journal of India*, Vol. 25 (1979).
26. Tripathi, R.S. and Tiwari, R.P., *Regional Disparities and Development in India*, Ashish Publishing House, New Delhi (1993).